

Rittal – The System.

Faster – better – everywhere.

Digital Brochure

ENCLOSURES

POWER DISTRIBUTION

CLIMATE CONTROL

IT INFRASTRUCTURE

SOFTWARE & SERVICES

FRIEDHELM LOH GROUP

www.rittal.ca



Rittal – The System.

Faster – better – everywhere.



Support Arm Systems

CP 40 Support Arm System

Component Overview, Steel	129
CP 40 Support Section, Steel	130
CP 40 Components, Steel	131
Component Overview, Stainless Steel	132
CP 40 Support Section, Stainless Steel	132
CP 40 Components, Stainless Steel	133

CP 60 Support Arm System

Component Overview	137
CP 60 Support Section	138
CP 60 Components	139

CP 120 Support Arm System

Component Overview	141
CP 120 Support Section	142
CP 120 Components	143

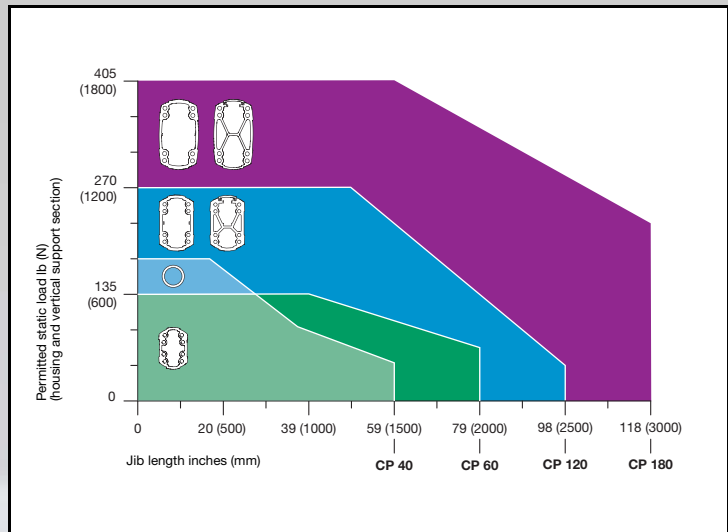
CP 180 Support Arm System

Component Overview	145
CP 180 Support Section	146
CP 180 Components	147



Load Data

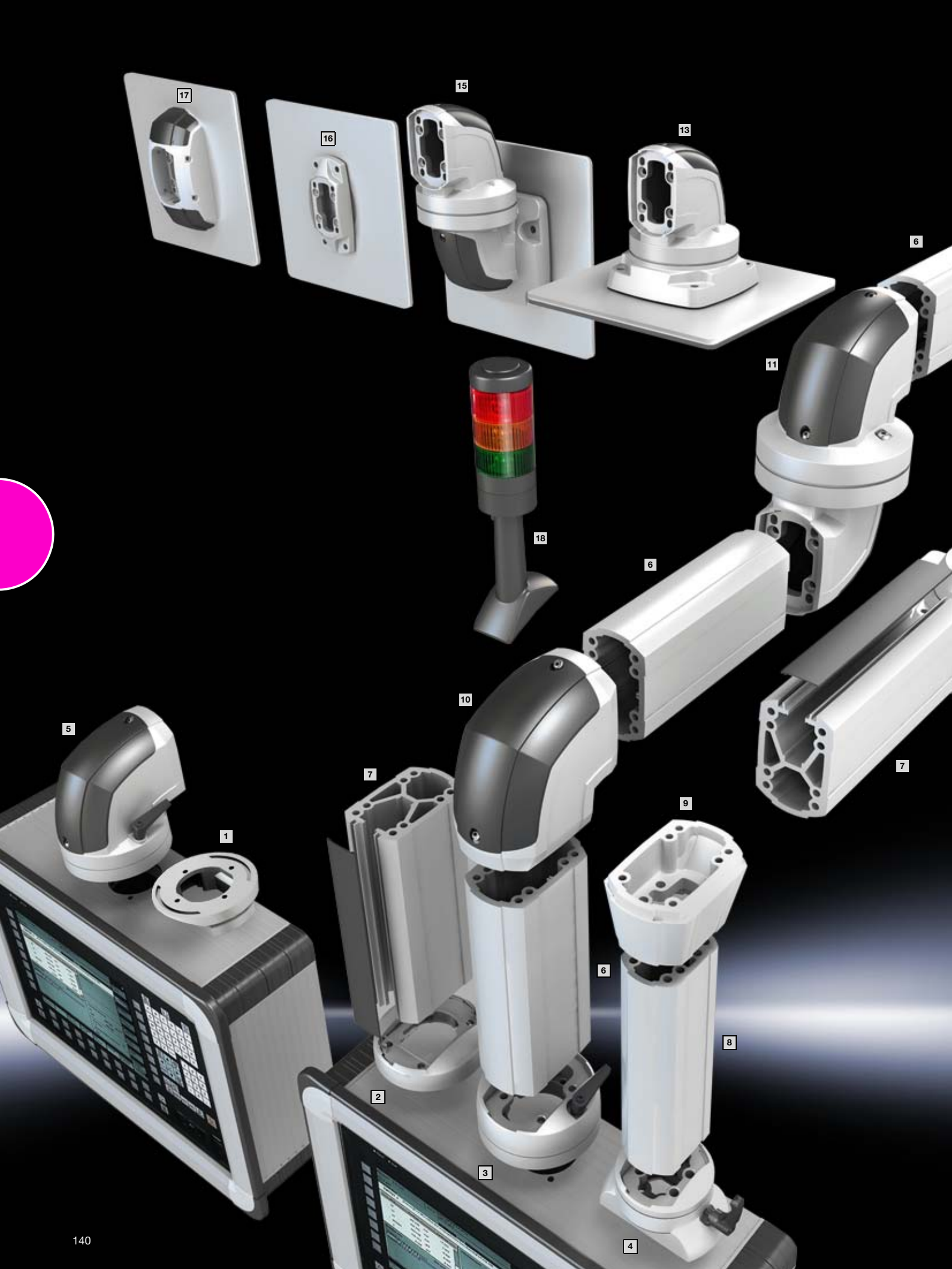
Support arm systems compared



Support Arm Configurator

The support arm configurator utilizes user-specific parameters to select the correct support arm system.

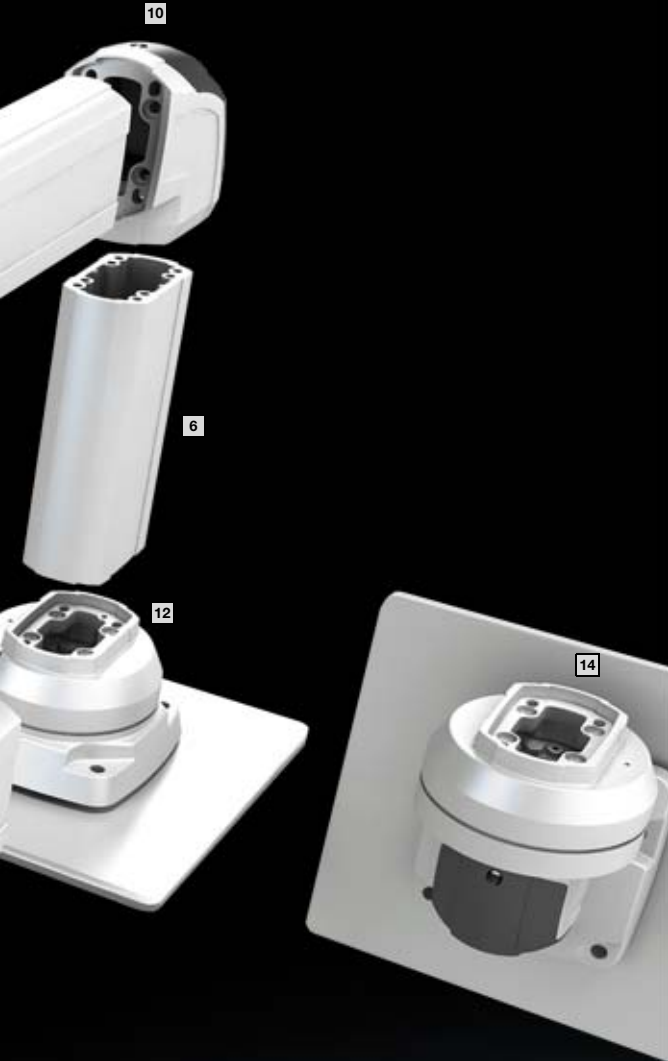
Further information is available on the Rittal website



CP 120 Support Arm System

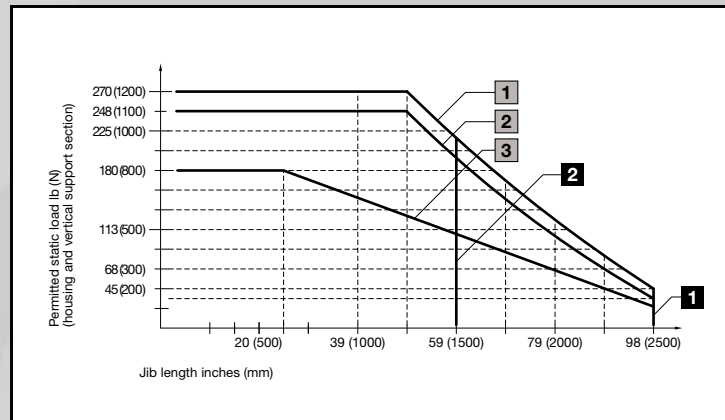
Component Overview

- 1 CP 120 Adapter from Support Arm Connection Ø 130 mm to □ 120 x 65 mm (6212.500)
- 2 CP 120 Attachment for Ø 130 mm Support Arm Connection (6212.320)
- 3 CP 120 Coupling for Ø 130 mm Support Arm Connection (6212.300)
- 4 CP 60 Coupling for □ 120 x 65 mm Support Arm Connection (6206.340)
- 5 CP 120 90° Angle Coupling for Ø 130 mm Support Arm Connection (6212.380)
- 6 CP 120 Support Section, Closed (6212.025, 6212.050, 6212.100, 6212.200)
- 7 CP 120 Support Section, Open (6212.150, 6212.110, 6212.210)
- 8 CP 60 Support Section, Closed (6206.025, 6206.050, 6206.100, 6206.200)
- 9 Adapter for CP 120/60 Support Arm Combination (6212.640)
- 10 CP 120 90° Angle Piece (6212.600)
- 11 CP 120 Intermediate Joint (6212.620)
- 12 CP 120 Top-Mounted Joint, Vertical Outlet (6212.720)
- 13 CP 120 Top-Mounted Joint, Horizontal Outlet (6212.700)
- 14 CP 120 Wall Joint, Vertical Outlet (6212.760)
- 15 CP 120 Wall Joint, Horizontal Outlet (6212.740)
- 16 CP 120 Wall/Base Mount, Small (6212.820)
- 17 CP 120 Wall/Base Mount, Large (6212.800)
- 18 CP 120/180 Mounting Component for Signal Pillar (6212.900)



Load Data

Permitted load depending on system assembly



- 1 System assembly without 6212.620 intermediate joint, with open or closed support section
 - 2 System assembly with 6212.620 intermediate joint and closed support section
 - 3 System assembly with 6212.620 intermediate joint and open support section
- 1 Maximum system length 2500 mm in the case of systems with horizontal outlet at start of system.
- 2 Maximum system length 1500 mm in the case of systems with vertical outlet at start of system. The overall height in the case of a vertical system start must not exceed 500 mm.

Note:

- Do not use wall/base mount, small 6212.820 together with intermediate joint 6212.620!
- Only use one intermediate joint 6212.620 per system!

CP 120 Support Arm System



Comfort panel Page 124 Command panel with handle strips Page 120 Command panel for desktop TFT Page 122

CP 120 support section

Attached to the connection components with 4 self-tapping screws in the screw channel. May be cut to any length, no thread-tapping required. Closed cable duct with a large cross-section. Open cable duct for easy servicing access and for pre-assembled cables with connectors; lockable via cover profile.

X-shaped profiling for greater load capacity, large cable routing channels. Upper channel suitable for cables with large connectors (e.g. DVI or VGA) and available/usable throughout the entire system.

Dimensions:

- External dimensions: 75 x 120 mm

Material:

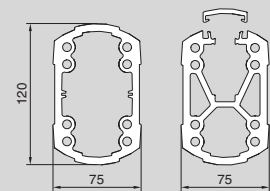
- Support section: Extruded aluminum section

Color:

- Support section: RAL 7035

Supply includes:

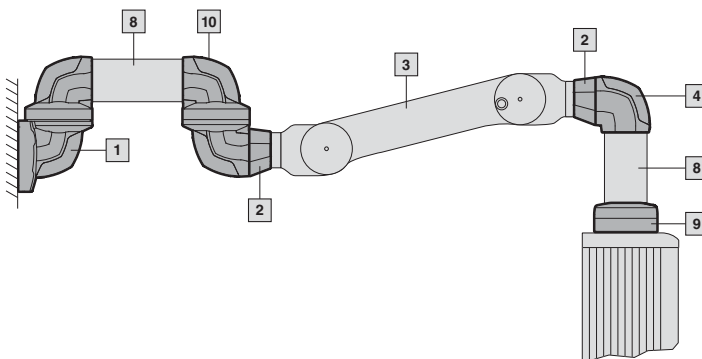
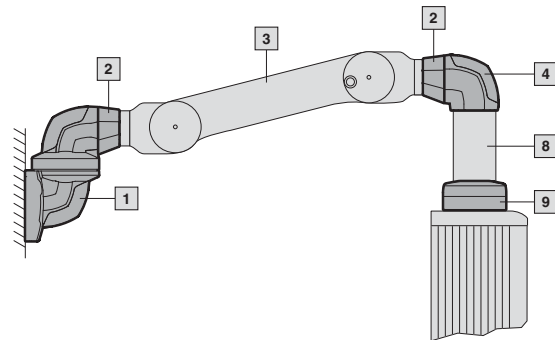
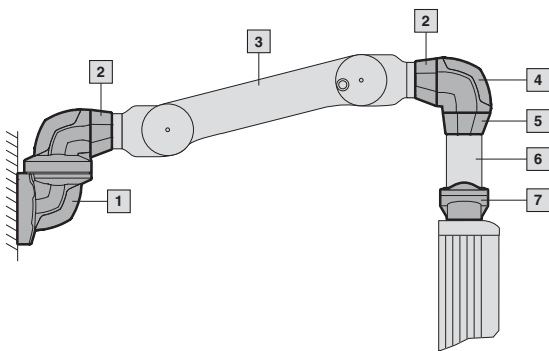
- Support section



Technical details:





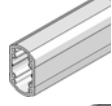
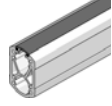



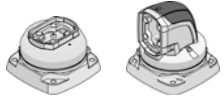
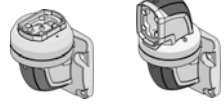



Available on the Internet

Combinations with support arm, height adjustable



- 1 CP 120 Wall Joint, Horizontal Outlet (6212.740)
- 2 CP 120 Adapter to Support Arm, height adjustable (6071.600)
- 3 Support arm, height adjustable, see page 152
- 4 90° CP 120 Angle Piece (6212.600)
- 5 Adapter for CP 120/60 Support Arm Combination (6212.640)
- 6 CP 60 Support Section, L = 500 mm (6206.050)
- 7 CP 60 Coupling for □ 120 x 65 mm Support Arm Connection (6206.340)
- 8 CP 120 Support Section, Closed, L = 500 mm (6212.050)
- 9 CP 120 Coupling for Ø 130 mm Support Arm Connection (6212.300)
- 10 CP 120 Intermediate Joint (6212.620)

CP 120 Support Arm System

	Rotating/tilting	Rigid	Length inches (mm)	Weight lb (kg)	Color RAL	Housing section CP 120	Housing section CP 120/60	Center section CP 120	Wall section CP 120	
						Model No.				
CP 120/60 adapter from support arm connection, Ø 130 mm to 120 x 65 mm										
	see page 149	-	■	-	1.1 (0.5)	7035	6212.500	6212.500	-	-
CP 120/60 attachment for support arm connection										
	Ø 130 mm	-	■	-	1.5 (0.7)	7035	6212.320	6206.320	-	-
	□ 120 x 65 mm	-	■	-	1.5 (0.7)	7035	-	6206.360	-	-
CP 120/60 coupling for support arm connection										
	Ø 130 mm	■	-	-	4.4 (2.0)	7035	6212.300	6206.300	-	-
	□ 120 x 65 mm	-	■	-	-	-	-	6206.340	-	-
CP 120 90° angle coupling for support arm connection										
	Ø 130 mm	■	-	-	4.6 (2.1)	7035/ 7024	6212.380	-	-	-
CP 120/60 Support section										
	Closed	-	-	10 (250)	4.4 (2.0)	7035	CP 120	CP 60 ¹⁾	CP 120	CP 120
		-	-	20 (500)	8.6 (3.9)		6212.025	6206.025	6212.025	6212.025
		-	-	39 (1000)	17.2 (7.8)		6212.050	6206.050	6212.050	6212.050
		-	-	79 (2000)	34.4 (15.6)		6212.100	6206.100	6212.100	6212.100
	Open	-	-	20 (500)	10.1 (4.6)	7035/ 7024	-	-	6212.150	6212.150
		-	-	39 (1000)	20.3 (9.2)		6212.110	6212.110	6212.110	
		-	-	79 (2000)	40.6 (18.4)		6212.210	6212.210	6212.210	
Adapter for CP 120/60 support arm combination										
	see page 151	-	■	-	1.5 (0.7)	7035	-	6212.640	-	-
90° CP 120 angle piece										
		-	■	-	2.4 (1.1)	7035/ 7024	6212.600	-	-	6212.600
CP 120 intermediate joint										
		■	-	-	9.7 (4.4)	7035/ 7024	-	-	6212.620	-
CP 120 top-mounted joint										
	Vertical outlet	■	-	-	8.4 (3.8)	7035	-	-	-	6212.720
	Horizontal outlet	■	-	-	9.5 (4.3)	7035/ 7024	-	-	-	6212.700
CP 120 wall joint										
	Vertical outlet	■	-	-	12.1 (5.5)	7035/ 7024	-	-	-	6212.760
	Horizontal outlet	■	-	-	13.4 (6.1)	7035/ 7024	-	-	-	6212.740
CP 120 wall/base mount, small										
		-	■	-	1.1 (0.5)	7035	-	-	-	6212.820
CP 120 wall/base mount, large										
		-	■	-	5.5 (2.5)	7035/ 7024	-	-	-	6212.800
CP 120/180 mounting component for signal pillar										
	see page 620	-	■	-	0.2 (0.1)	7024	6212.900	6212.900	6212.900	6212.900
Tilting adapter										
For Ø 130 mm support arm connection and □ 120 x 65 mm									see page 139	
Accessories										
CP 120 adapter to support arm, height adjustable 6071.600									see page 151	

¹⁾ Weight data and graphics for CP 60, see page 139

CP 40/60/120/180 Support Arm System



VESA 75/100 Connection Console

For rear connection of

- slimline command panels
- commercially available TFTs
- industrial PCs

using a VESA 75/100 connection

Connection to Rittal support arm systems

- CP 40
- CP 60
- CP 120 via adapter from support arm connection Ø 130 mm to □ 120 x 65 mm

Advantages:

- Fast, simple one-person assembly using machined keyholes
- More space for installation and servicing
- Cables may be routed to devices inside and outside the console
- Removable cover for easy cable routing and access to interior device connections
- Integral cable clamping facilities
- Cover with captive screws

Material:

- Cast aluminum

Color:

- Connection console: RAL 7035
- Cover: RAL 7024

Supply includes:

- Seal and assembly components
- Cable ties for cable clamping

Weight lb (kg)	Model No.
2.4 (1.1)	6206.480

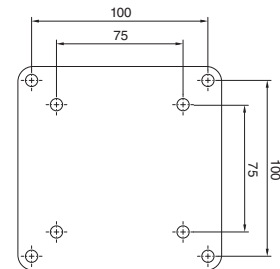
! Also required:

- CP 60 attachment for support arm connection □ 120 x 65 mm, 6206.360
- CP 60 coupling for support arm connection □ 120 x 65 mm, 6206.340
- 10° tilting adapter for support arm connection □ 120 x 65 mm, 6206.440
- CP 40 coupling for support arm connection □ 120 x 65 mm, 6501.130
- +/-45° tilting adapter for support arm connection □ 120 x 65 mm, 6206.460
- Adapter from support arm connection Ø 130 mm to □ 120 x 65 mm, 6212.500

Technical details:

Available on the Internet

VESA connection hole pattern



Connection console

- For rear connection of slimline command panels
- Removable cover for easy cable routing

Connection to Rittal support arm systems

- CP 40
- CP 60
- CP 120 via adapter from support arm connection Ø 130 mm to □ 120 x 65 mm

Material:

- Cast aluminum

Color:

- RAL 7024

Supply includes:

- Seal and assembly components
- Cable ties for cable clamping

Weight lb (kg)	Model No.
1.5 (0.7)	6508.010

Technical details:

Available on the Internet

CP 40/60/120/180 Support Arm System

Adapter

from support arm connection Ø 130 mm to
□ 120 x 65 mm

For external mounting of command panels with
□ 120 x 65 mm support arm cut-out and
VESA 75/100 connection console to

- CP 120 coupling, 6212.300
- CP 120 attachment, 6212.320
- 90° CP 120 angle coupling, 6212.380
- Pivot with jib, 6016.600
- Pivot for machine-integrated installation, 6016.700

Material:

- Cast aluminum

Color:

- RAL 7035

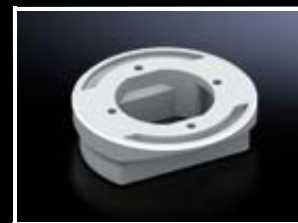
Supply includes:

- Seals
- Assembly components

Height inches (mm)	Weight lb (kg)	Model No.
2 (40)	1.1 (0.5)	6212.500

Technical details:

Available on the Internet



Adapter

from support arm connection Ø 180 mm to
Ø 130 mm

For mounting between:

- Housings with Ø 180 mm support arm connection and
- CP 60/120 coupling for Ø 130 mm support arm connection, 6206.300, 6212.300
- CP 60/120 attachment for Ø 130 mm support arm connection, 6206.320, 6212.320
- Pivot, 6016.600, 6016.700

Material:

- Cast aluminum

Color:

- RAL 7035

Supply includes:

- Seals
- Assembly components

Height inches (mm)	Weight lb (kg)	Model No.
0.8 (20)	1.3 (0.6)	6212.520

Technical details:

Available on the Internet



Adapter

for Siemens Pro-Panel

For mounting Siemens Simatic

- MP 377 15" Pro
- Thin Client 15" Pro
- Flat Panel Monitor 15", 19" Pro
- HMI IPC477C 15" Pro

on support arm system

- CP 40, steel
- CP 60/120 with support arm connection
□ 120 x 65 mm

Material:

- Aluminum

Color:

- RAL 7035

Supply includes:

- Seals
- Assembly components

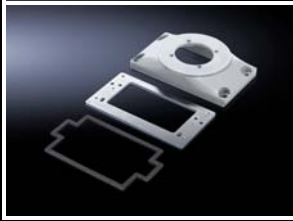
Weight lb (kg)	Model No.
0.7 (0.3)	6206.500

Technical details:

Available on the Internet



CP 40/60/120/180 Support Arm System



Connection plates

with reinforcement plate

- For easy location of the command panel onto the support arm or pedestal
- More space for cable entry

For mounting command panels

- Comfort Panel from a front panel width of 247 mm and installation depth of 152 mm
- Carbon steel from 135 mm installation depth

For mounting on support arm system components

- CP 60/120 attachment for Ø 130 mm support arm connection, 6206.320, 6212.320
- CP 60/120 coupling for Ø 130 mm support arm connection, 6206.300, 6212.300
- 90° CP 60/120 angle coupling for Ø 130 mm support arm connection, CP 6206.380, 6212.380
- 10° CP 60/120 tilting adapter, for Ø 130 mm support arm connection, CP 6206.400
- ±45° CP 60/120 tilting adapter, for Ø 130 mm support arm connection, CP 6206.420

Weight lb (kg)	Model No.
3.1 (1.4)	6212.540

Material:

- Connection plate: Cast aluminum
- Reinforcement plate: Carbon steel, 6 mm

Color:

- RAL 7035

Supply includes:

- Reinforcement plate
- Seals
- Assembly components

Technical details:

Available on the Internet



90° angle adapter

for support arm combination CP 60 to CP 40

Application:

- Connection component from CP 60 horizontal to CP 40 vertical
- For external mounting of small, slimline command panel with CP 40 components, if the greater load capacity of CP 60 is needed for large jib lengths or if an intermediate joint is required for the application

Advantages:

- With integral adjustment facility
- Removable cover for easy cable routing

Material:

- Angle adapter 90°: Cast aluminum
- Cover: Plastic

Color:

- Angle adapter 90°: RAL 7035
- Cover: RAL 7024

Supply includes:

- Seals
- Adjusting screws
- Self-tapping screws and clamping screws for support section attachment

Weight lb (kg)	Model No.
2.2 (1.0)	6206.640



Accessories:

- Mounting component for signal pillars (6206.900), for connecting to the cover, see page 620

Technical details:

Available on the Internet



CP 40/60/120/180 Support Arm System

Adapter

For support arm combination

- CP 120 to 60
- CP 180 to 120

Application:

- Connection component between large and small support arm systems, where this arrangement is chosen for static, visual or cost reasons
- For mounting small, flat command panel if the load capacity of a larger system is needed horizontally for long jib lengths

Advantages:

- Integral adjustment facility

Material:

- Cast aluminum

Color:

- RAL 7035

Supply includes:

- Seals
- Self-tapping screws for support section attachment

For support arm system	Weight lb (kg)	Model No.
CP 120 to 60	1.5 (0.7)	6212.640
CP 180 to 120	3.3 (1.5)	6218.640

Technical details:

Available on the Internet



CP 120 adapter to support arm, height adjustable

Application:

- For integration of the height-adjustable support arm to the CP 120 support arm system

Advantages:

- Integral adjustment facility

Material:

- Cast aluminum

Color:

- RAL 7035

Supply includes:

- Seals
- Incl. self-tapping screws for support section attachment

Weight lb (kg)	Model No.
1.3 (0.6)	6071.600

Technical details:

Available on the Internet



CP 40/60/120/180 Support Arm System



Support Arm, Height Adjustable

for CP 120 support arm system

Offers enhanced ergonomics thanks to:

- Adjustment range
 - for big and small operators
 - for working when seated or standing
 - adjustable to up to 800 mm as required using an adjusting screw on the front of the support arm
- Precise coordination of the compression spring to the housing weight via an adjusting screw on the rear of the support arm
- Complete functional reliability – if the compression spring breaks, the arm will remain in position
- Clip-off plastic panels for access to integral cable routing
- Tilting angle of the mounted housing is identical in every height position

For 6510.330 and 6510.340

- More space for cable routing
- Cables with connectors such as DVI, VGA are also easily inserted
- Integral locking in three stages
- Higher load capacity

Supply includes:

- Assembly components

Overall length inches (mm)	Color RAL	Weight range lb (kg) ¹⁾	Model No.
38 (962)	9006	22 – 44 (10 – 20)	6510.210
43 (1090)	9006	33 – 71 (15 – 32)	6510.330
43 (1090)	9006	44 – 88 (20 – 40)	6510.340

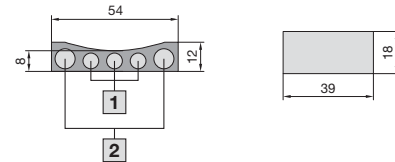
¹⁾ Applies to configured housing and vertical support section

Note:

Maximum cross-section for cable entry:

- 6510.210 = 8 x 15 mm

6510.330, 6510.340
 Maximum number of introduced cables Maximum connector dimensions



1 Max. Ø 7 mm (3 x)

2 Max. Ø 8.5 mm (2 x)

Technical details:

Available on the Internet



Housing Coupling

for desktop mounting

Stable, rotating connection with extra space for cable routing.

To provide additional stability for the top and base with heavy installed equipment.

For mounting

- Command Panels from an installation depth of 150 mm on/to
- IW worktops
- Horizontal surfaces (floors or ceilings)

Mounting

- of Command Panel: One-person assembly using machined keyholes
- on surfaces: Using external screws with cover

Rotation range:

- Max. 350°, lockable via clamping levers
- Inserting additional M6 cheese-head screws enables the rotation range to be limited to ±28°, ±73°, ±118°, ±163°

Material:

- Housing coupling: Cast aluminum/die-cast zinc
- Reinforcement plate: Carbon steel, 6 mm

Surface finish:

- Housing coupling: Powder-coated, textured
- Reinforcement plate: Zinc-plated

Color:

- Housing coupling: RAL 7024

Supply includes:

- Reinforcement plate
- Seals
- Assembly components

Version	Comfort Panel	Weight lb (kg)	Model No.
W = 16" (418 mm)	17 (435) ¹⁾	9.2 (4.2)	6528.410

¹⁾ From a front panel width inches (mm) without keyboard housing, with keyboard housing on request

Note:

- With the Comfort Panel housing, the rectangular support arm cut-out can be selected, ordered and prepared using the command panel configurators on the Rittal website

Technical details:

Available on the Internet

CP 40/60/120/180 Support Arm System

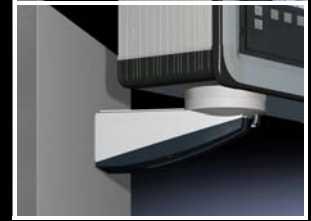
Pivot

with/without jib

- For direct, pivoted integration into machines and systems
- Housing suspended or top-mounted
- With integral rotation range restrictor
- To fit housings with Ø 130 mm mounting cut-out

Jib length inches (mm)	Color RAL	Load capacity lb (N)	Model No.
–	7024	157 (700)	6016.700
8 (200)	7024/7035	157 (700)	6016.600

Technical details:
Available on the Internet



Tilting adapter +/-45°

for command panels with Ø 130 mm support arm connection

For mounting between:

- CP 60 coupling, 6206.300
- CP 120 coupling, 6212.300

or

- CP 60 attachment, 6206.320
- CP 120 attachment, 6212.320

or

- 90° CP 60 angle coupling, 6206.380
 - 90° CP 120 angle coupling, 6212.380
- and command panel

Tilting angle:

- Adjustable in 7.5° steps

Material:

- Tilting adapter: Cast aluminum
- Concertina section: Plastic

Color:

- Tilting adapter: RAL 7035
- Concertina section: RAL 7024

Supply includes:

- Seals
- Concertina section
- Assembly components

Weight lb (kg)	Model No.
2.6 (1.2)	6206.420

Technical details:
Available on the Internet





Tilting adapter +100°/-60°

For command panel with support arm connection □ 120 x 65 mm

For mounting on

- IW worktop, prepared for attachment of Ø 130 mm
- Surfaces
- For attachment/coupling with support arm connection □ 120 x 65 mm

Suitable for enclosures up to 20 kg with support arm connection

- □ 90 x 71 mm
- Ø 130 mm
- □ 120 x 65 mm
- VESA Standard 75

With cable tube for protected cable entry.

Tilting angle:

- Adjustable in 7.2° increments via clamping lever and may be limited to +100°/-15° using the stop screw supplied.

Material:

- Tilting adapter: Carbon steel, spray finished
- Concertina section: Plastic

Color:

- Tilting adapter: RAL 7035
- Concertina section: RAL 7024

Supply includes:

- Concertina section
- Assembly components

Weight lb (kg)	Model No.
1.8 (0.8)	6206.460

Technical details:

Available on the Internet